

Bear Valley School's Safety Protocols



At BVS, your health and safety is our priority. The following outlines updated safety protocols for Bear Valley School.



Welcome

- Please have students arrive between 8:20 and 8:35 am.
- K-7 will enter through elementary door (stagger entering to allow time for sanitizing and handwashing).
- 8-12 will enter through Secondary door.
- Hands will be sanitized/washed and personal items placed in lockers.



Provide Masks

- Masks will be provided for visitors, staff and students.
- Masks are required for grades 4-12, but will be available upon request for others

Mask Use

- Staff will wear masks at all times, except for when at personal work station, or eating/drinking.
- Grade 4-12's will wear them at all times, exceptions for eating and drinking at personal space.

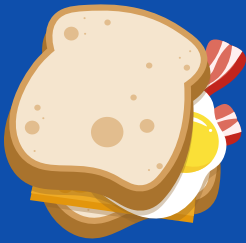


Learning Cohorts

- BVS will have two learning cohorts: PreK-7's with 55 people, and 8-12's with 26 people.

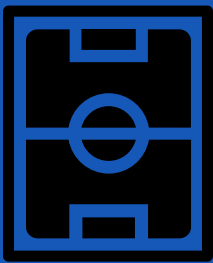
Make Space

- Students and staff will follow the social distancing 2m rule and all other posted guidelines while in and on school property.
- Specific bathrooms will be assigned to cohorts (K-7 by room 2; 8-12's by the gym and Gender Neutral will be available to anyone). Washrooms will be limited to 3 students at a time and signs will be posted.
- Lunch Supervision - cohorts will eat in designated spaces and not share spaces during the 'play-time.' K-7's will be outdoors and 8-12's are encouraged to take a break and go home for lunch or use the Learning Common.
- There will be no sharing of food at school or from home.
- Food programs will continue at BVS, but follow strict guidelines for preparation and handling.



Gym Use

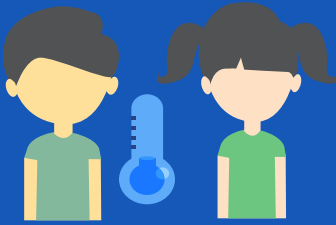
- Physical Education will be held outside as much as possible (weather permitting) (K-12) unless it's a low intensity activity that can have students 2m apart.
- Activities will be adapted to reduce physical contact (K-12).
- No activities that include prolonged physical contact or crowding.
- Masks should be worn indoors by the grade 8-12's during low-intensity activities where distancing cannot be practiced.
- Masks for 8-12's during high intensity activities is based on personal choice, but does not substitute the need for proper spacing.





Music

- Students in the same cohort will be spaced as far apart as possible.
- Masks to be worn by grade 8-12's when singing
- Instruments will be assigned to individual students and not shared.



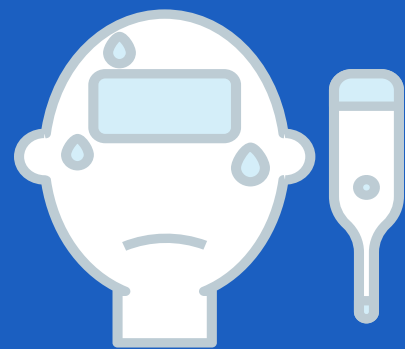
Health Screening

- All workers and students who have symptoms of COVID-19 or have travelled outside Canada in the last 14 days must stay home and self-isolate in accordance with guidance from the BC Centre for Disease Control. Self-isolation is also advised for those who are considered a close contact of a confirmed case.

- All staff will complete Active Health Checks before work each morning.

- Parents and caregivers must assess their child daily for symptoms of common cold, influenza, COVID-19, or other infectious respiratory disease before sending them to school. If a student develops symptoms while at home, parents or caregivers must keep their child at home until they have been assessed by a health care provider to exclude COVID-19 or other infectious diseases, and their symptoms have resolved.

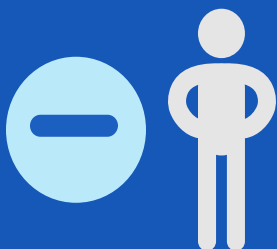
- Students who develop symptoms while at school will be isolated in medical room until parent can pick up child. The child will be required to wear a mask.



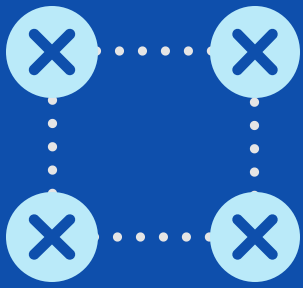
Please ensure contact information is up to date

Visitor Guidelines

- Outside visitors by appointment only.
- School doors will remain locked - please phone 250 636 2238 if your child is late so we may open the door upon arrival.
- All visitors will sign in and follow entry posted entry procedure (sanitize).



Floor Markings



- We will be marking 2m positions with brightly coloured duct tape and stickers so all have a sense of a safe distance to maintain from each other while waiting in lines for bathroom, office, and library check-out.

Fountains



- Please bring a water bottle to school and take home to wash every night.
- Water fountains are off-limits, but the water bottle filling station may be used.

Custodial / Cleaning



- Extra soap and paper towels available
- Extra custodian will sanitize touch surfaces at least twice a day.
- Deep cleaning nightly

Handwashing



- Access to regular hand washing with soap, hand sanitizer and disinfectant wipes will be provided and all common areas will be cleaned on a regular basis.
- Students and staff are required to wash hands on arrival and when transitioning to new areas. (Check out our new hand washing stations!)

Together, we can learn and stay safe!

Please adhere to these guidelines to keep our people safe onsite. We know that it'll be challenging to adapt to the New Normal. However, it'll require our collective effort to make our school a safe place to operate.

