




# Catchment Area Review Suwilaawks Community School & Cassie Hall Elementary School

A Consultation for a Proposed Change to Catchment Boundaries




1



Coast Mountains School District is in service to diverse First Nations, Métis and Inuit learners and their caregivers who live, learn and play on the traditional lands of the Gitxsan, Haisla, Nisga'a and Ts'msyen peoples.

We acknowledge their histories, languages, cultures, and protocols that continue to guide and sustain Indigenous Peoples.

## Acknowledgement

2024

Catchment Area Review

2

2

# Catchment Area Review - Terrace

## Suwilaawks Community School & Cassie Hall Elementary School

The Board of Education of Coast Mountains School District 82 is looking for feedback on a proposed school boundary change that will affect both Suwilaawks Community School and Cassie Hall Elementary. Currently, Highway 16 has acted as the natural boundary separating the two schools' catchment areas. What is being considered is expanding Cassie Hall Elementary's boundary into an area on the northside of the Highway 16 and as far west as New Remo. This change will encompass some of the new multi-family construction happening west of Eby Street.

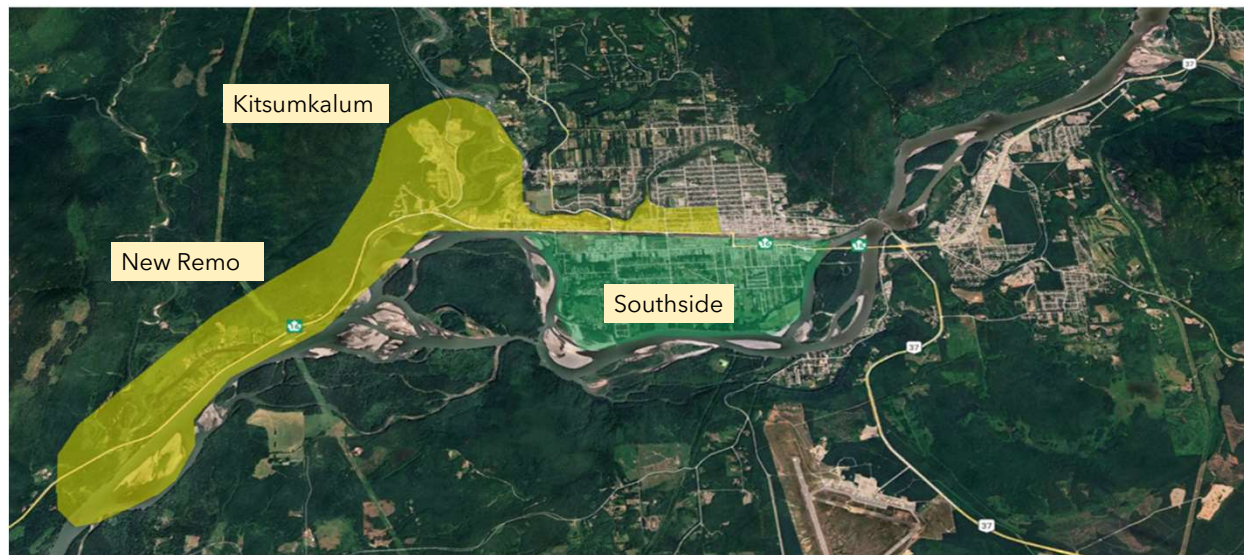
2024

Catchment Area Review

3

3

## PROPOSED CATCHMENT CHANGE



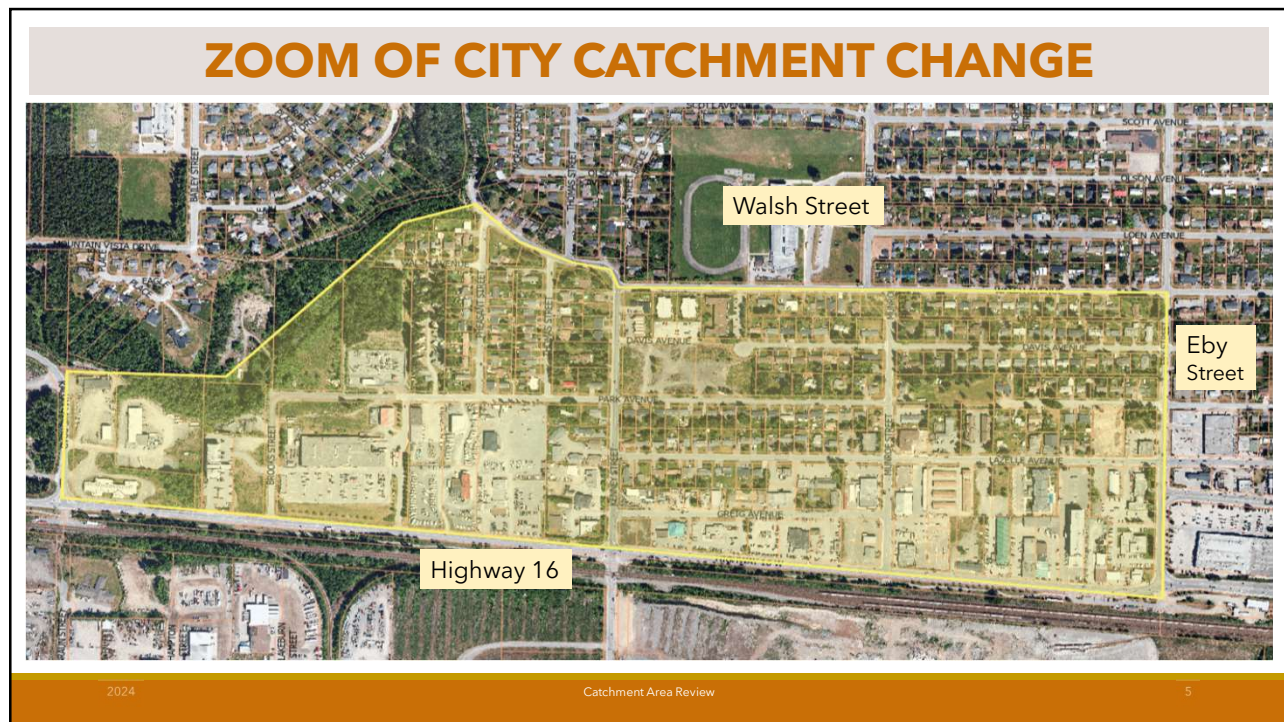
2024

Catchment Area Review

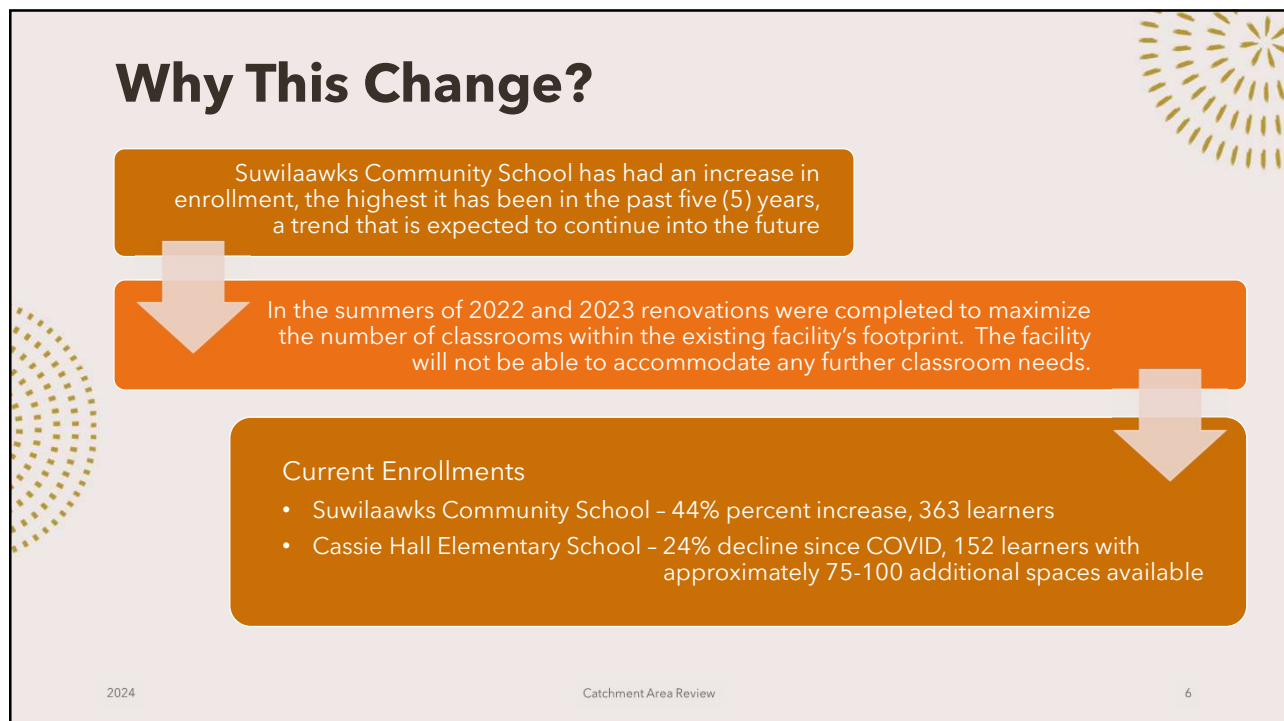
4

4





5



6

## Data Collection

Through the Ministry of Education and Child Care data base, MyEd, we were able to estimate the number of students that are currently enrolled with the School District in the area affected within this proposal.

There are approximately 62 learners within the new boundary, but understandably this number will change every year.



2024

Catchment Area Review

7

7

## Alignment With New Legislation

Although the community of Kitsumkalum is included in the proposal, there is new legislation pertaining to First Nations within the School Act - School Amendment Act (Bill 40)

Kitsumkalum First Nation has the option to identify a school of choice, outside their catchment area, for learners residing on-reserve.




2024

Catchment Area Review

8

8



## Programs Available at Both Schools;

- Strong Start
- Breakfast and Lunch Programs
- Just B4 Program
- Literacy Initiative
- ASSAI (After School Sports and Arts Initiative)

2024
Catchment Area Review
9

9


## Issues for Consideration

### Transportation Supports

Staff are currently evaluating where 2 school bus stops could be placed between Pheasant Street and Eby Street

### Grandfather Clause

How to accommodate current learners and their families that fall within the proposed area next year and moving forward.



2024
Catchment Area Review
10

10



## Next Steps...

First, set up consultation with schools, families and community – Dates in March to be announced

Consultation will occur in person at Suwilaawks Community School and online. All information will be posted on the Coast Mountains School Board website [www.cmsd.bc.ca](http://www.cmsd.bc.ca), all questions and feedback are encouraged.

Lastly, all information including feedback will be presented to the School Board Trustees for a decision now how the District will move forward.

2024

Catchment Area Review

11

11



## Questions?

2024

Catchment Area Review

12

12